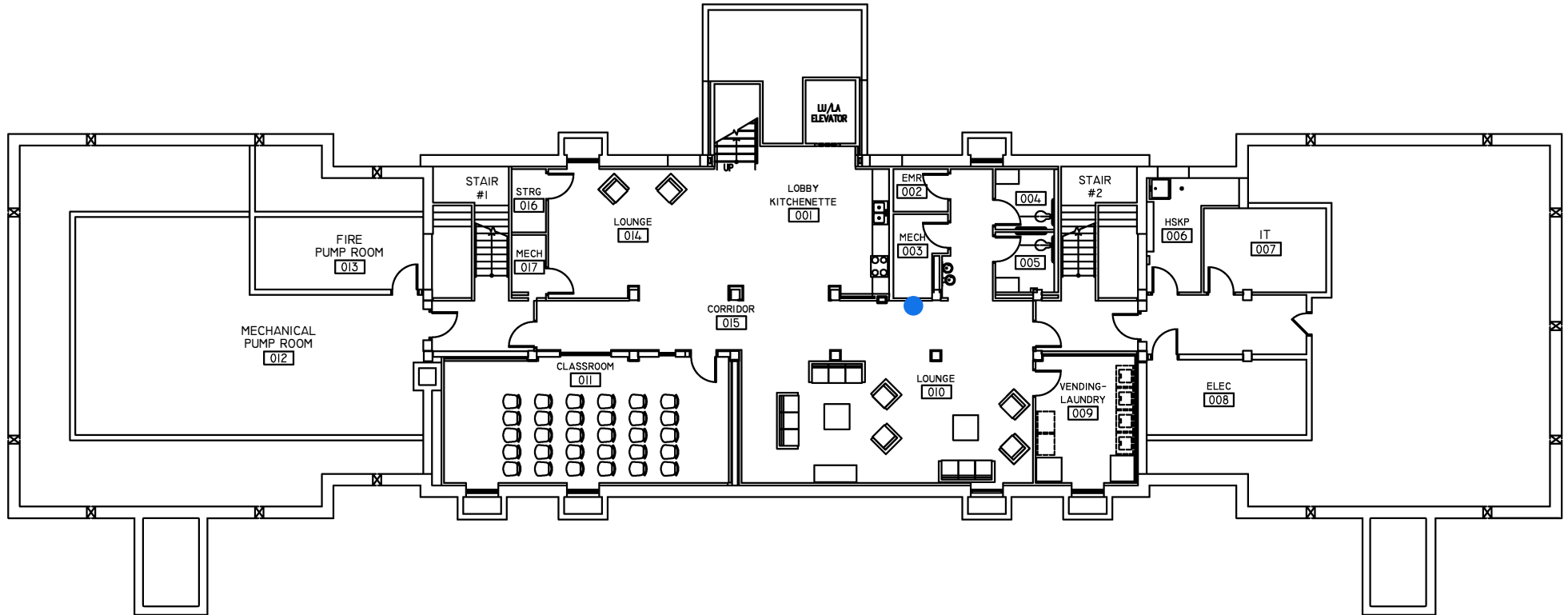


● Water Bottle Refill Station

● Standard Water Fountain



DWG. NO.:

A-0

BLDG. CODE

WI

ISSUE DATE:
JUNE 22, 2018

SCALE: NTS

DESIGN BY:
PLA

CHECKED BY:
JCD

RECORD FLOOR PLAN
WICOMICO HALL

PROJECT
NAME:

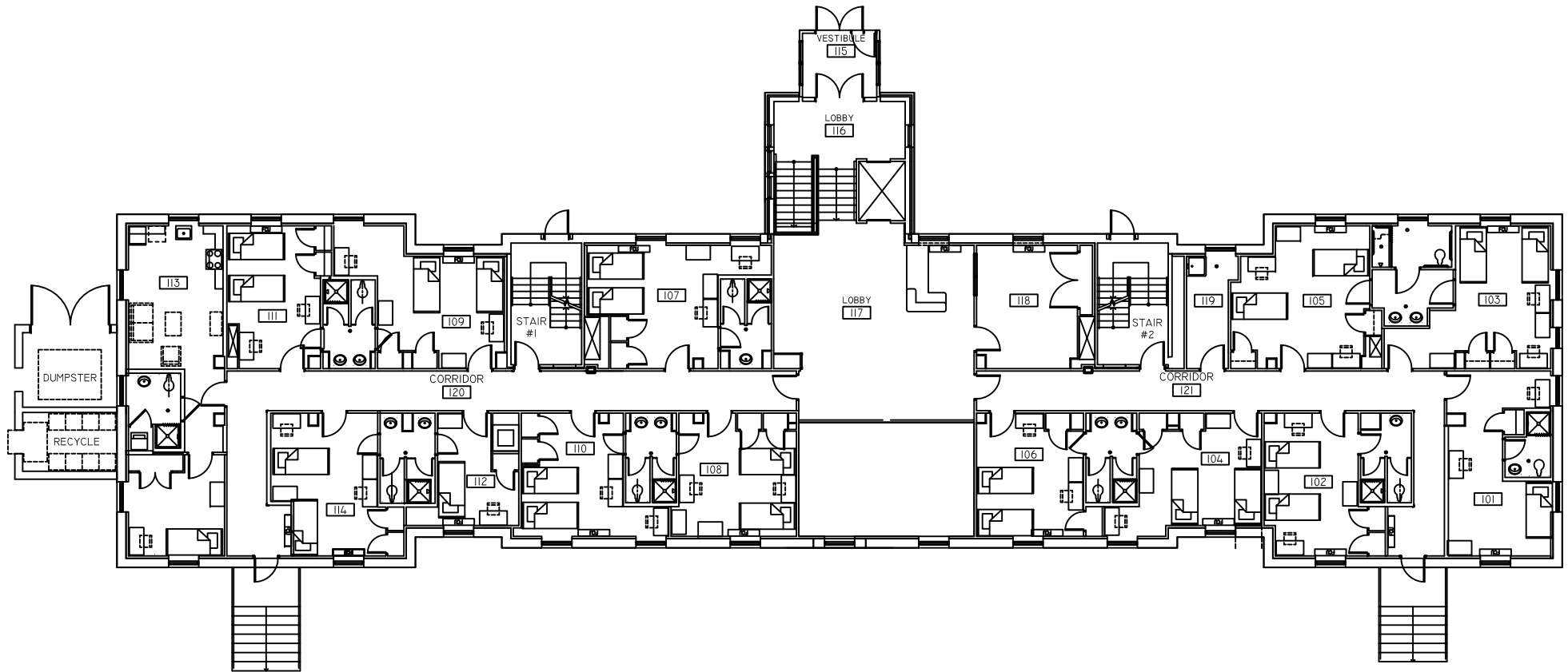
BASEMENT FLOOR PLAN

SALISBURY UNIVERSITY

FACILITIES PLANNING & CAPITAL PROJECTS
ARCHITECTURAL AND ENGINEERING SERVICES

1101 CAMDEN AVENUE
SALISBURY, MARYLAND 21801

410 - 543 - 6215

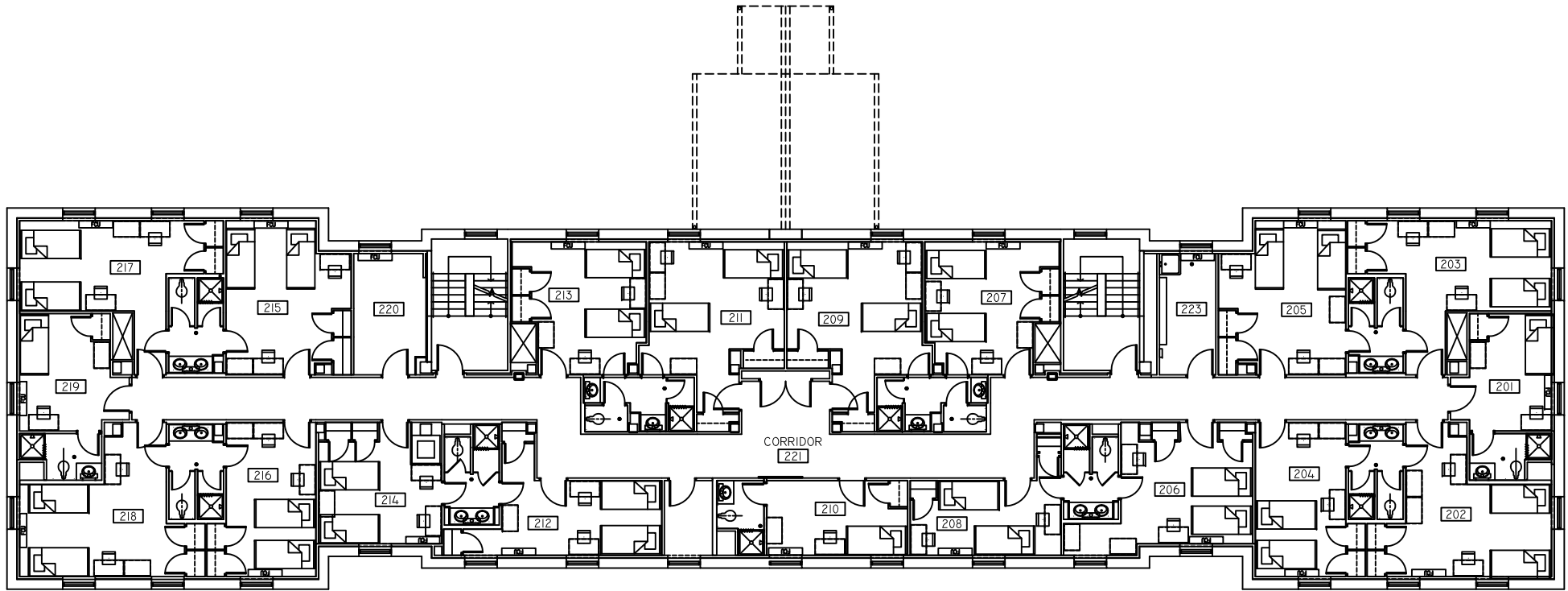


DWG. NO.:	ISSUE DATE:
A-1	JUNE 22, 2018
BLDG. CODE	SCALE:
WI	NTS
	DESIGN BY:
	PLA
	CHECKED BY:
	JCD

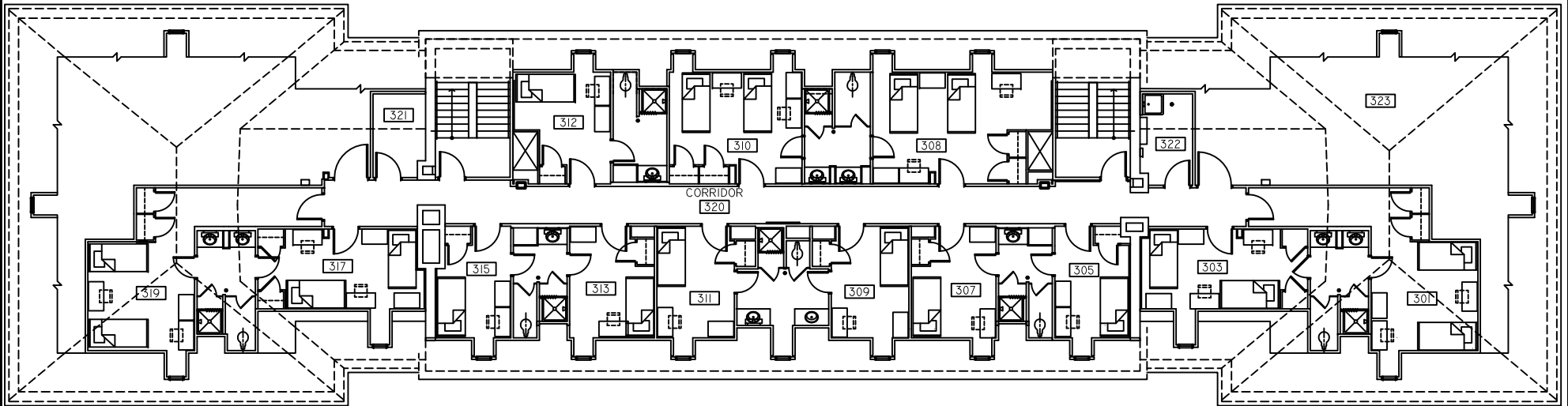
**RECORD FLOOR PLAN
WICOMICO HALL**

PROJECT NAME:
FIRST FLOOR PLAN

SALISBURY UNIVERSITY
FACILITIES PLANNING & CAPITAL PROJECTS
ARCHITECTURAL AND ENGINEERING SERVICES
1101 CAMDEN AVENUE
SALISBURY, MARYLAND 21801
410 - 543 - 6215



DWG. NO.: A-2 BLDG. CODE W1	ISSUE DATE: JUNE 22, 2018	RECORD FLOOR PLAN WICOMICO HALL	SECOND FLOOR PLAN	SALISBURY UNIVERSITY FACILITIES PLANNING & CAPITAL PROJECTS ARCHITECTURAL AND ENGINEERING SERVICES 1101 CAMDEN AVENUE SALISBURY, MARYLAND 21801 410 - 543 - 6215
	SCALE: NTS			
	DESIGN BY: PLA			
	CHECKED BY: JCD			



DWG. NO.:

A-3

BLDG. CODE

WI

ISSUE DATE:
JUNE 22, 2018

SCALE:
NTS

DESIGN BY:
PLA

CHECKED BY:
JCD

**RECORD FLOOR PLAN
WICOMICO HALL**

PROJECT
NAME:

THIRD FLOOR PLAN

SALISBURY UNIVERSITY

FACILITIES PLANNING & CAPITAL PROJECTS
ARCHITECTURAL AND ENGINEERING SERVICES

1101 CAMDEN AVENUE

SALISBURY, MARYLAND 21801

410 - 543 - 6215